

A red rough terrain forklift is shown from a low-angle perspective, parked on a rocky, uneven surface. The forklift has large, treaded tires and a protective cage. The background features a range of mountains under a clear sky. The text "Dirty Jobs Done Dirt Cheap!!" is overlaid on the right side of the image.

Dirty Jobs Done Dirt Cheap!!

**Rough Terrain
Forklift
1.8 - 5.0 Tonne**

2WD • Compact 4WD • 4WD

BUILT FOR ROUGH TERRAIN

Rough Terrain Forklift Introduction

2WD

Strong flexibility
in rough terrain

**Compact
4WD**

Original product
replenished Rough
Terrain fields



Patented self-designed axle &
transmission, compact size meet
with European standard.

Rough Terrain Forklift Introduction

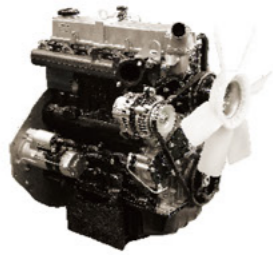
Engine

World renowned brands engine for superior performance.

MITSUBISHI S4S

Rated output 35.3kw/2250rpm >

Rated torque 182N.m/1800rpm >



YANMAR 4TNE98

Rated output 42.1kw/2300rpm >

Rated torque 196.3N.m/1700rpm >



PERKINS 1104C-44TA

Rated output 74.5kw/2300rpm >

Rated torque 415N.m/1350rpm >



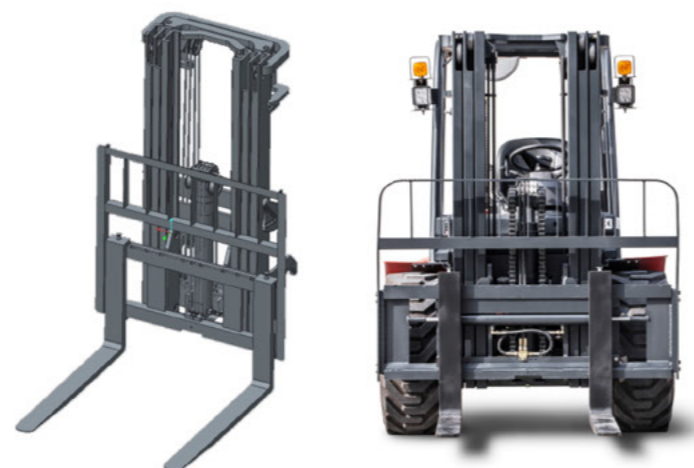
Floating System

A superior full floating overhead guard is installed with rubber damping instead of the traditional rigid design. This greatly reduces machine vibration and offers a smoother ride over rough terrain and reduces operator fatigue.



Wide-view Mast

Wide-view mast provides excellent through-the-mast visibility improving the work efficiency and allowing safe operation of the forklift.



High Quality Tyres

Industrial tyres with a wide footprint giving it greater stability and lift capacity in rough work environments.



High Ground Clearance

Offer greater maneuverability and keep the machine moving in the roughest of applications.



Tilting Overhead Guard (4WD)

Equipped as standard with a tilting overhead guard, to ensure easy access to major components for inspection and service.

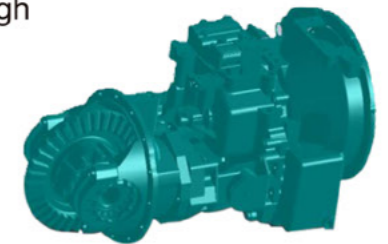
Upward Steering Cylinder (Compact 4WD)

Lay the steering cylinder upward to make the turning radius smaller and rear wheel steering angle bigger.



100% Differential Lock (2WD)

Power shift transmission with jaw type 100% differential lock provides ultimate traction during inclement weather conditions and rough operating surfaces.



Our Solution, Your Decision

	2WD					Compact 4WD			
YES ● / NO ●	1.8T	2.5T	3.5T	4T	5T	1.8T	2.5T	3.5T	
Body	Floated Overhead Guard			●			●		
	4WD-2WD Rocker Switch			—			●		
	Industrial Tyres (F/R)	● / ●	● / ●	● / ●	● / ●	● / ●	● / ●	● / ●	
	Suspension Pedal			●			●		
	Truck Width (mm)	1450	1557.5	1600	2067	2067	1450	1450	1600
	Loaded into 20GP Container	●	●	● (Deflate the tyres)	●	●	● (Deflate the tyres)	●	●
	External Type Steering Cylinder			●			●		
	With Prefilter			●			●		
	LED Lights			Standard			Standard		
	Safety Start System*			Standard			Standard		
	Suspension Seat			Option			Option		
	OPS system			Option			Option		
Performance	Engine	YANMAR 4TNE98		YANMAR 4TNE98	Perkins 1104C-44TA/1104D-44TA	YANMAR 4TNE98/	MITSUBISHI S4S	YANMAR 4TNE98	
	Gradeability	20%	20%	16%	30%	80%/60%	50%	45%	
	Gradient	11.3°	11.3°	9°	16.7°	38.6°/31°	26.5°	24.2°	
	Min. Turning Radius(mm)	2840	2870	2870	3550	3120	3120	3120	
	Transmission Model	Hydraulic					Hydraulic		
	Differential Lock Type	Jaw Type Differential Lock					Limited Slip Differential Lock		
	Differential Ratio	100%					45%		

Safety Start System* The truck can't start if any below: 1-operator leaves the seat, 2-seatbelt unfastened, 3-hand brake released, 4-not in N position.



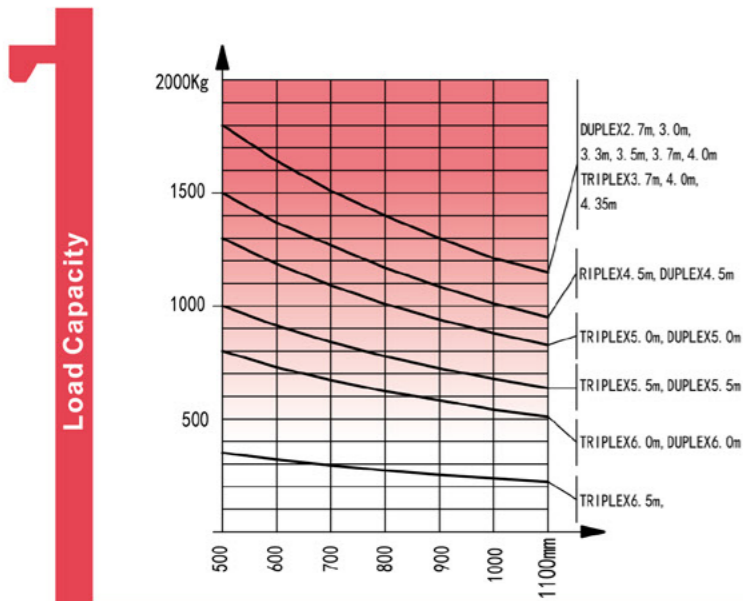
Forklift Specification

2WD 1.8T/2.5T/3.5T								
General	1	Model	FD18T-AT	FD25T-AT	FD35T-AT			
	2	Power type	Diesel					
	3	Rated capacity	1800	2500	3500			
	4	Load centre	500					
Characteristic&Dimension	5	Lifting height	3000					
	6	Height	105	160	165			
	7	Fork size	L×W×T	1070×100×35	1070×122×40	1220×122×45		
	8	Fork regulating range	Min./Max.	200-1000	250-1160	250-1160		
	9	Mast tilt angle	F/R	10/12				
	10	Front overhang	mm	509	586	601		
	11	Rear overhang	mm	520	520	520		
	12	Min.ground clearance(drive steer axle)	mm	255	270	270		
	13	Overall dimensions	Length to face of fork (without fork)	mm	2990	2946	2956	
	14		Overall width	mm	1450	1557.5	1600.5	
	15		Mast lowered height	mm	2148	2265	2330	
	16		Mast extended height (with backrest)	mm	4170	4175	4305	
	17		Overhead guard height	mm	2260	2256.5	2276	
	18	Turning radius	mm	2840	2870	2870		
Performance	19	Min. right angle stacking aisle width	Pallet size a ₁₂ =1000,b ₁₂ =1200	mm	4760	4860	4870	
			Pallet size a ₁₂ =1200,b ₁₂ =800	mm	4360	4460	4470	
	20	Speed	Travel(Laden/Unladen)	Km/h	20/18	20/18	22/22	
			Lifting(Laden)	mm	610	600	450	
Lowering(Laden)			mm	450	445	500		
23	Max. Drawbar pull(Laden)	KN	13	17	17			
24	Max. Gradeability(Laden)	%	20	20	16			
Tyre	25	Tyre	Front	12-16.5-12PR	12-16.5-12PR	14-17.5-14PR		
			Rear	27×10-12-12PR	27×10-12-12PR	27×10-12-12PR		
	27	Tread	Front	mm	1123	1250.5	1250.5	
			Rear	mm	1205			
29	Wheelbase	mm	1880					
Weight	30		Self weight	kg	3960	4465	5180	
	31	Weight Distribution	Laden	Front axle	kg	4954	5990	7725
				Rear axle	kg	806	975	955
			Unladen	Front axle	kg	1584	1785	2070
Rear axle				kg	2376	2680	3110	
Power&Transmission	35	Battery	Voltage/Capacity	V/Ah	12/90	12/90	12/90	
	36	Engine	Model	4TNE98-BQFLC				
			Manufacture	YANMAR				
			Rated output/r.p.m.	Kw	42.1/2300			
			Rated torque/r.p.m.	N.m	196.3/1700			
			No. of cylinder		4			
			Bore×Stroke	mm	98×110			
	42	Displacement	L	3.318				
	43	Fuel tank capacity	L	55				
	44	Manufacture	China					
45	Transmission	Type	Powershift	Powershift	Powershift			
		Stage	F/R					
		Operating pressure	Mpa	16.5	20	20		

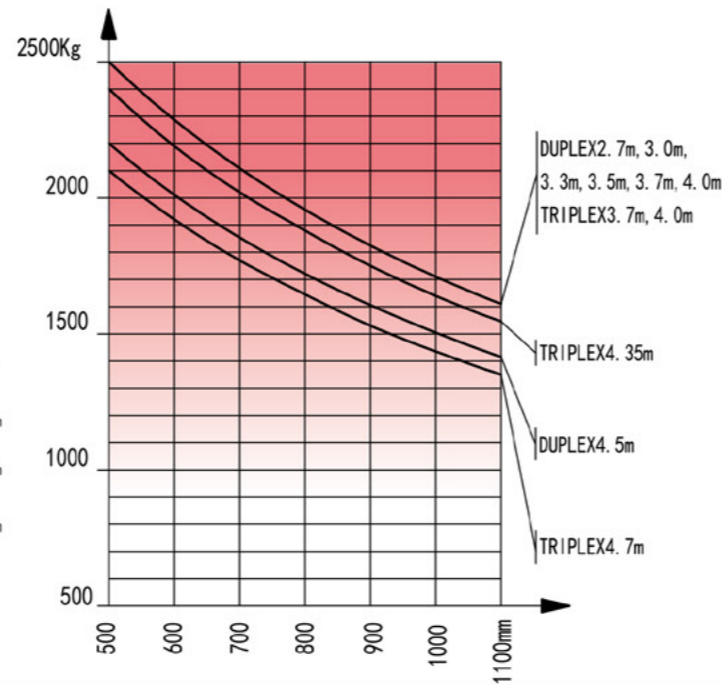
Compact 4WD 1.8T/2.5T/3.5T									
General	1	Model	FD18T-4WD	FD25T-4WD	FD18T-4WD	FD25T-4WD	FD35T-4WD		
	2	Power type	Diesel						
	3	Rated capacity	Kg	1800	2500	1800	2500	3500	
	4	Load centre	mm	500	500	500	500	500	
Characteristic&Dimension	5	Lifting height	mm	3000	3000	3000	3000	3000	
	6	Free lift	mm	105	160	105	160	165	
	7	Fork size	L×W×T	mm	1070×100×35	1070×122×40	1070×100×35	1070×122×40	1220×122×45
	8	Fork regulating range	Min./Max.	mm	200-1315	250-1310	200-1315	250-1310	250-1500
	9	Mast tilt angle	F/R	Deg	10/12				
	10	Front overhang	mm	520	586	520	586	601	
	11	Rear overhang	mm	600					
	12	Min.ground clearance(drive steering axle)	mm	219					
	13	Min.ground clearance(chassis) (Unladen/Laden)	mm	230/215	230/215	230/215	230/215	224/230	
	14	Min.ground clearance(mast) (Unladen/Laden)	mm	275/250	270/255	275/250	270/255	270/250	
	15	Ground clearance (drawbar pin)	mm	354.5	354.5	354.5	354.5	430	
	16	Height from seat surface to overhead guard inner side	mm	990	990	990	990	1043	
	17	Overall dimensions	Length to face of fork (without fork)	mm	3000	3066	3000	3066	3081
			Overall width	mm	1450	1450	1450	1450	1600
			Mast lowered height	mm	2145	2235	2145	2235	2330
			Mast extended height (with backrest)	mm	4140	4175	4140	4175	4305
			Overhead guard height	mm	2256	2256	2256	2256	2276
	22	Turning radius	mm	3120	3120	3120	3120	3120	
	23	Min. right angle stacking aisle width	Pallet size a ₁₂ =1000,b ₁₂ =1200	mm	4629	4706	4629	4706	4921
			Pallet size a ₁₂ =1200,b ₁₂ =800	mm	4829	4906	4829	4906	4871
			Min. right angle stacking aisle width(pallet size a ₁₂ =1200,b ₁₂ =1200)	mm	2670		2670		2725
	26	Speed	Travel(Unladen/Laden)	Km/h	18/17	18/17	20/19	20/19	19/18
			Lifting(Unladen/Laden)	mm	620/590	620/570	640/610	650/600	510/485
			Lowering(Unladen/Laden)	mm	420/450	510/450	420/450	510/450	500/450
Max. Drawbar pull			KN	31	38	38	38	38	
Max. Gradeability			%	60	50	80	50	45	
31	Braking distance	m	≤6		≤6		≤6		
32	Tyre	Front		12-16.5-12PR	12-16.5-12PR	14-17.5L-14PR			
		Rear		10.0/75-15.3	10.0/75-15.3	10.0/75-15.3			
		Tyre pressure(Front/Rear)	Mpa	0.62/0.55		0.62/0.55	0.55/0.55		
		Tread	Front	mm	1123	1123	1250		
			Rear	mm	1190	1190	1190		
		37	Ground clearance (Front tyre centre)(Unladen/Laden)	mm	405.5/385	405.5/385	450.5/425		
38	Ground clearance (Rear tyre centre)(Unladen/Laden)	mm	370/350	370/350	370/385				
39	Wheelbase	mm	1880		1880				
40	Weight Distribution	Self weight		kg	4255	4830	4255	4830	5545
		Laden	Front axle	kg	4602	6597	4602	6597	7872
			Rear axle	kg	1453	733	1453	733	1073
		Unladen	Front axle	kg	1702	2173	1702	2173	2345
			Rear axle	kg	2553	2657	2553	2657	3100
45	Battery	Voltage/Capacity	V/Ah	12/90					
Power&Transmission	46	Engine	Model	S4S	4TNE98-BQFLC				
			Manufacture	MITSUBISHI	YANMAR				
			Rated output/r.p.m.	Kw	35.3/2250				
			Rated torque/r.p.m.	N.m	182/1800				
			No. of cylinder		4				
			Bore×Stroke	mm	94×120				
	51	Displacement	L	3.331					
	52	Fuel tank capacity	L	55					
	54	Transmission	Manufacture	China	China				
			Type	Powershift	Powershift				
Stage			F/R	2/1					
57	Operating pressure	Mpa	16.5	20	16.5	20	20		

Mast Specification

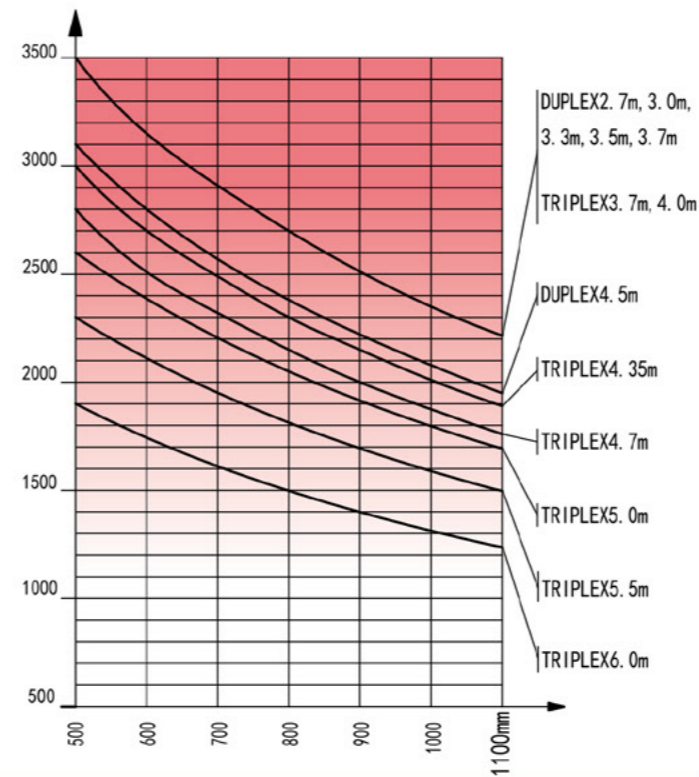
Type	Model	Max. fork height mm	Overall height			Free lift						Front Overhang			Tilt range		Capacity at max. height Load Center 500mm					
			Lowered			With backrest			Without backrest			1.8T	2.5T	3.5T	FWD Deg	BWD Deg	Without side shift carriage			With side shift carriage		
			1.8T	2.5T	3.5T	1.8T	2.5T	3.5T	1.8T	2.5T	3.5T	1.8T	2.5T	3.5T			1.8T	2.5T	3.5T			
			mm	mm	mm	mm	mm	mm	mm	mm	mm	mm	mm	mm	mm	kg	kg	kg	kg	kg	kg	
wide view 2-stage mast	M270	2700	1998	2085	2180	105	160	165	105	160	165	509	585	600	10°	12°	1800	2500	3500	1800	2500	3200
	M300	3000	2148	2235	2330	105	160	165	105	160	165	509	585	600	10°	12°	1800	2500	3500	1800	2500	3200
	M330	3300	2298	2385	2480	105	160	165	105	160	165	509	585	600	10°	12°	1800	2500	3500	1800	2500	3200
	M350	3500	2398	2485	2580	105	160	165	105	160	165	509	585	600	10°	12°	1800	2500	3500	1800	2500	3200
	M370	3700	2498	2585	2680	105	160	165	105	160	165	509	585	600	10°	12°	1800	2500	3500	1800	2500	3200
	M400	4000	2698	2785	2880	105	160	165	105	160	165	509	585	600	10°	12°	1800	2500	3400	1800	2500	3100
	M450	4500	2948	3035	3130	105	160	165	105	160	165	509	585	600	10°	12°	1500	2200	3100	1400	2100	2900
	M500	5000	3198	---	---	105	---	---	105	---	---	509	---	---	6°	6°	1300	---	---	1200	---	---
	M550	5500	3498	---	---	105	---	---	105	---	---	509	---	---	6°	6°	1000	---	---	900	---	---
M600	6000	3748	---	---	105	---	---	105	---	---	509	---	---	6°	6°	800	---	---	400	---	---	
Full free 3-stage mast	TFM360	3600	1908	---	---	725	---	---	1105	---	---	509	---	---	10°	12°	1800	---	---	1800	---	---
	TFM370	3700	---	1990	2115	---	798	790	---	1243	1246	---	590	620	---	---	---	2500	3500	---	2400	3100
	TFM400	4000	2033	2080	2205	850	888	890	1230	1333	1336	509	590	620	10°	12°	1800	2500	3400	1800	2400	3100
	TFM435	4350	2158	2205	2330	980	1013	1015	1360	1458	1461	509	590	620	10°	12°	1800	2400	3000	1600	2200	2900
	TFM450	4500	2208	---	---	1030	---	---	1410	---	---	509	---	---	10°	12°	1500	---	---	1400	---	---
	TFM470	4700	---	2320	2445	---	1128	1130	---	1573	1576	---	590	620	---	---	---	2100	2800	---	1900	2500
	TFM480	4800	2308	---	---	1130	---	---	1510	---	---	509	---	---	10°	12°	1400	---	---	1300	---	---
	TFM500	5000	2408	2455	2580	1230	1263	1265	1610	1708	1710	509	590	620	6°	6°	1300	1900	2600	1200	1600	2300
	TFM550	5500	2573	2620	2745	1390	1428	1430	1770	1873	1875	509	590	620	6°	6°	1000	1500	2300	900	1200	2100
	TFM600	6000	2758	2805	2930	1580	1613	1615	1960	2058	2060	509	590	620	6°	6°	800	1200	1900	400	800	1600
TFM650	6500	2973	3020	3145	1790	1828	1830	2180	2273	2275	509	590	620	6°	6°	350	700	1300	200	400	1100	



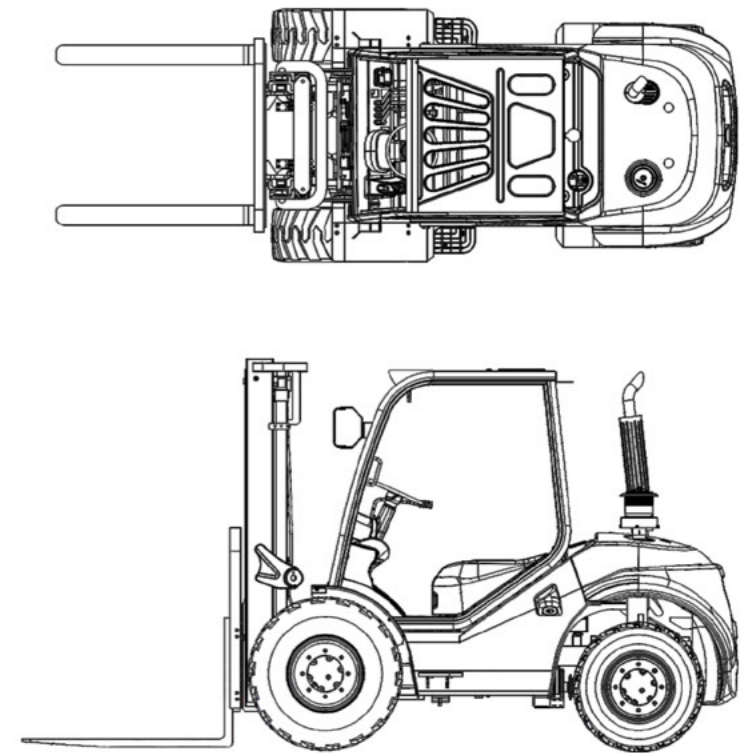
1.8T Load Chart



2.5T Load Chart



3.5T Load Chart



Forklift Specification

Mast Specification

2WD 4T/5T						
General	1	Model	FD40T-AT	FD50T-AT		
	2	Power type	Diesel	Diesel		
	3	Rated capacity	Kg	4000	5000	
	4	Load centre	mm	600	600	
Characteristic&Dimension	5	Lifting height	mm	3000	3000	
	6	Free lift height	mm	145	145	
	7	Fork size	L×W×T	mm	1220*150*50	1220*150*55
	8	Fork regulating range	Min./Max.	mm	300/1954	300/1954
	9	Mast tilt angle	F/R	Deg	15°/15°	15°/15°
	10	Front overhang		mm	732	732
	11	Rear overhang		mm	764	764
	12	Ground clearance	Middle of frame(Unladen/Laden)	mm	374/354	374/354
	13		Bottom of mast(Unladen/Laden)	mm	320/320	320/320
	14	Overall dimensions	Length to face of fork(without fork)	mm	3622	3622
	15		Overall length(with fork)	mm	4837	4837
	16		Wheel width	mm	2055	2055
	17		Frame width	mm	2067	2067
	18		Mast lowered height	mm	2565	2565
19	Mast extended height(with backrest)		mm	4170	4170	
20	Overhead guard height		mm	2545	2545	
21	Min. turning radius		mm	3550	3550	
Performance	22	Speed	Travel(Unladen/Laden)	Km/h	22/21	22/21
	23		Lifting(Unladen/Laden)	mm/s	570/500	570/500
	24	Pressure	Laden lifting(normal/max)	Mpa	15.6/19	15.6/19
	25		Unladen lifting(normal/max)	Mpa	2.6/19	2.6/19
	26		Laden tilting(normal/max)	Mpa	front 1;rear 12/front 19; rear 19	
27	Max. Drawbar pull(Laden/unladen)		KN	50	50	
28	Max. Gradeability(Laden/unladen)		%	30	30	
Tyre	29	Tyre	Front		445-65-22.5PR/1175	445-65-22.5PR/1175
	30		Rear		12.5/80-18/958	12.5/80-18/958
	30	Tread	Front	mm	1620	1620
31	Rear		mm	1720	1720	
Weight	31	Wheelbase		mm	2125	2125
	32	Self weight		kg	7960	8450
Power&Transmission	33	Braking distance		m	≤6	≤6
	34	Engine	Model		1104C-44T	1104C-44T
	35		Manufacture		PERKINS	PERKINS
	36		Rated output/r.p.m.	Kw	74.5/2300	74.5/2300
	37		Rated torque/r.p.m.	N.m	415/1350	415/1350
	38		No. of cylinder		4	4
	39		Bore×Stroke	mm	105×127	105×127
	40	Displacement	L	4.4	4.4	
	41	Transmission	Manufacture		China	China
	42		Type		Powershift	Powershift
43	Stage			F/R	2/1	2/1

Type	Model	Max. fork height	Overall height Lowered	Free lift		Front Overhang		Tilt range		Capacity			
				With backrest	Without backrest	4.0T	5.0T	FWD	BWD	capacity at max. height			
										mm	mm	mm	mm
wide view 2-stage mast	M300	3000	2565	145	145	727	732	15	15	4000	5000	3600	4700
	M330	3300	2715	145	145	727	732	15	15	4000	5000	3600	4700
	M350	3500	2815	145	145	727	732	15	15	4000	5000	3600	4700
	M370	3700	2915	145	145	727	732	15	15	4000	5000	3600	4700
	M400	4000	3115	145	145	727	732	15	15	4000	5000	3600	4700
	M450	4500	3365	145	145	727	732	15	15	3600	4500	3240	4050
Full free 3-stage mast	M500	5000	3615	145	145	727	732	15	15	3200	4000	2800	3600
	TFM400	4000	2560	1000	1350	760	765	15	15	4000	5000	3600	4500
	TFM435	4350	2685	1125	1475	760	765	15	15	3600	4500	3240	4050
	TFM450	4500	2736	1176	1526	760	765	15	15	3200	4000	2880	3600
	TFM470	4700	2802	1242	1592	760	765	15	15	2950	3700	2680	3350
	TFM500	5000	2935	1375	1725	760	765	10	15	2640	3300	2360	2950
TFM540	5400	3060	1500	1850	760	765	10	15	1920	2400	1720	2150	
TFM600	6000	3300	1740	2090	760	765	10	15	1600	2000	1400	1800	

